

Beyond mapping: National asset analysis to underpin SDG6

Climate Justice Fund Water Futures Programme (2011 – 2030)

Alexandra Miller
Hydrogeologist – Research Assistant

University of Strathclyde
James Weir Building
75 Montrose St.
Glasgow Scotland UK G1 1XJ

alexandra.miller@strath.ac.uk



Underpin SDG6: meaningful data

Management Information Systems (MIS) are essential to evolving *sustainable* decision-making for SDG6



WASH
infra-
structure

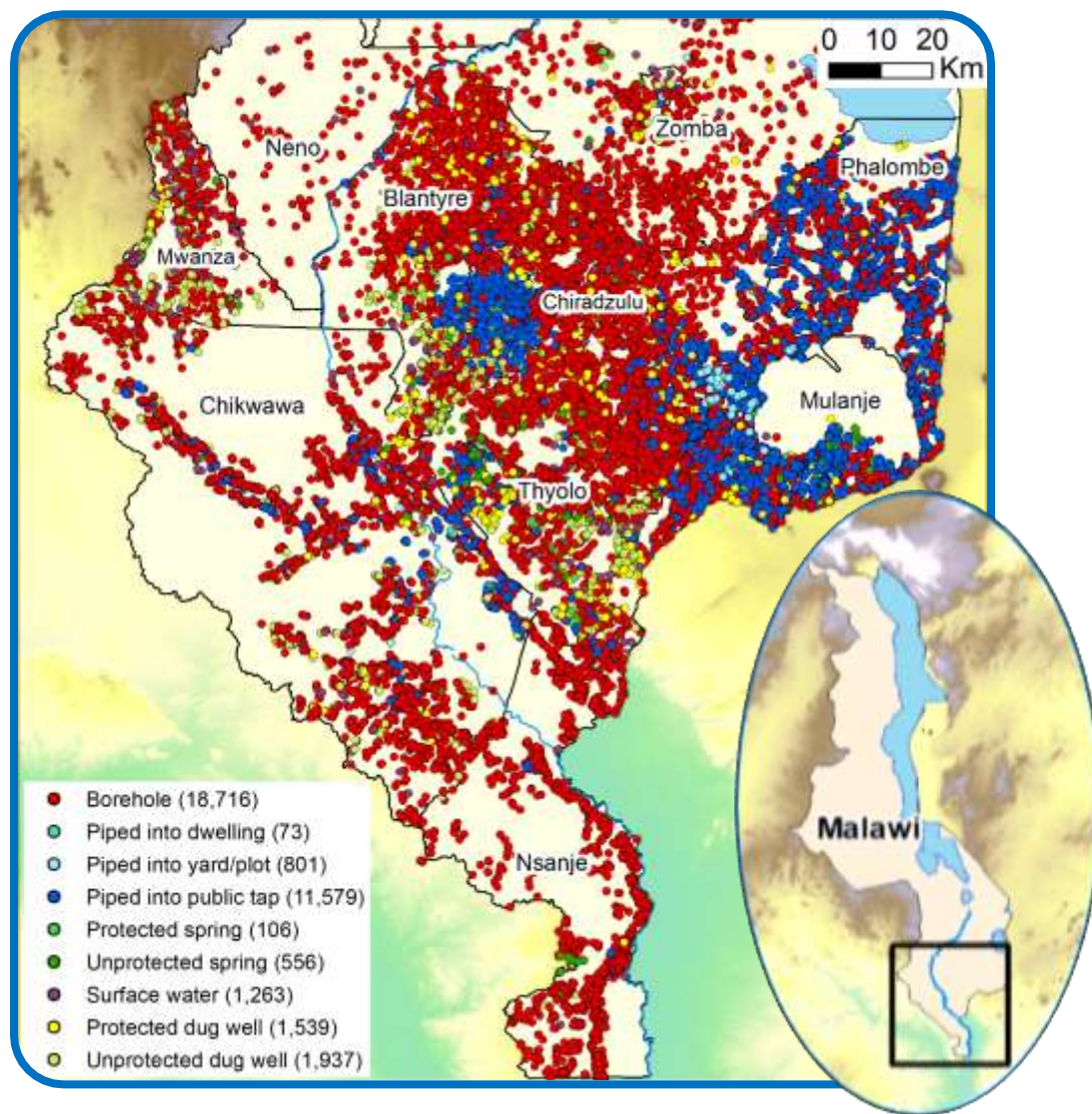


Traditional
database



SDG6

National Asset Register



- Availability
- Reliability
- Access
- Environment
- Management

	Water points	Pit latrines
Sites	53,882	95,880
Surveys	51,065	91,359
Data per survey	67	22

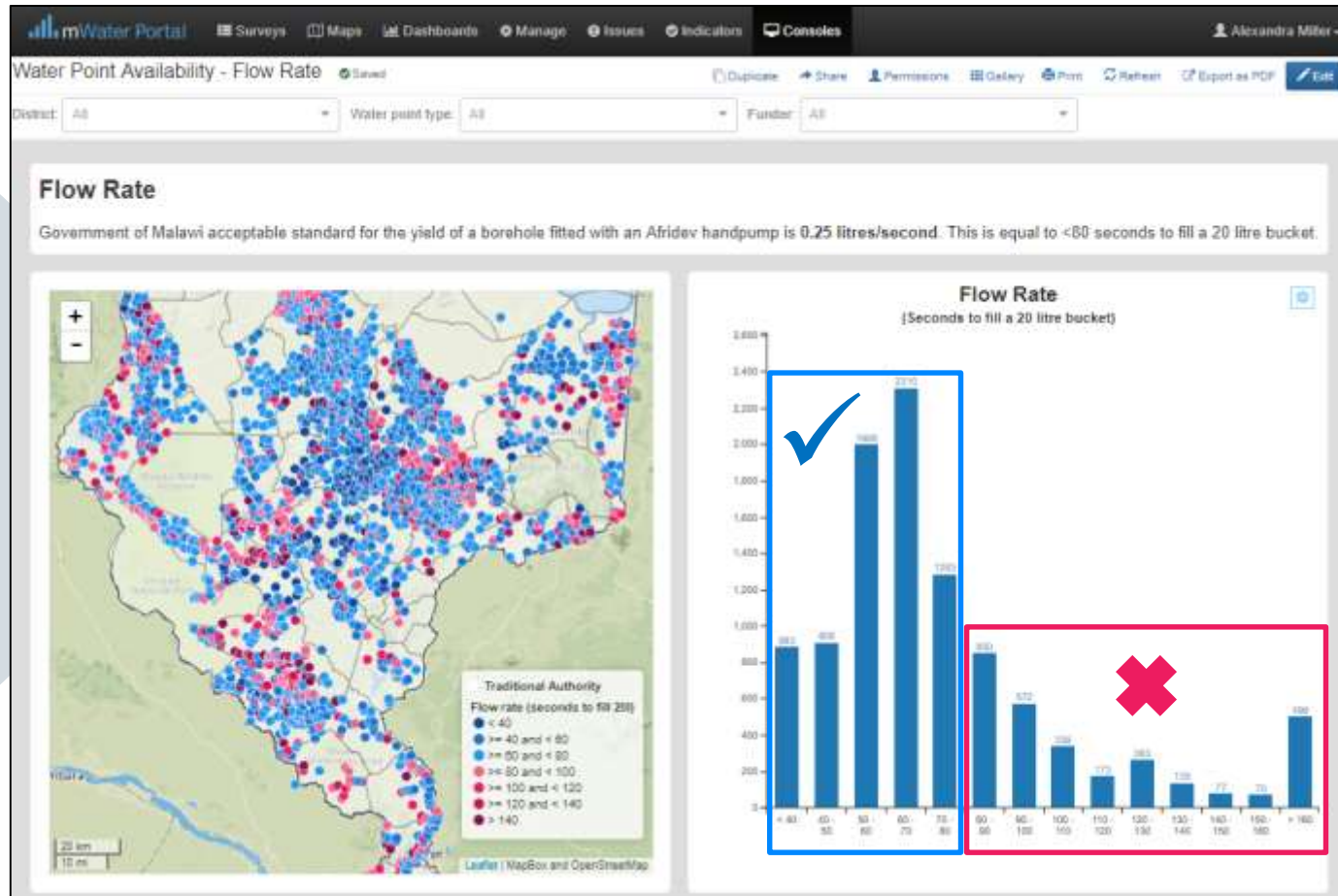
Asset Analysis 1 – Strategic Investment

Proactive planning: Practical Needs Assessments:

Flow rate

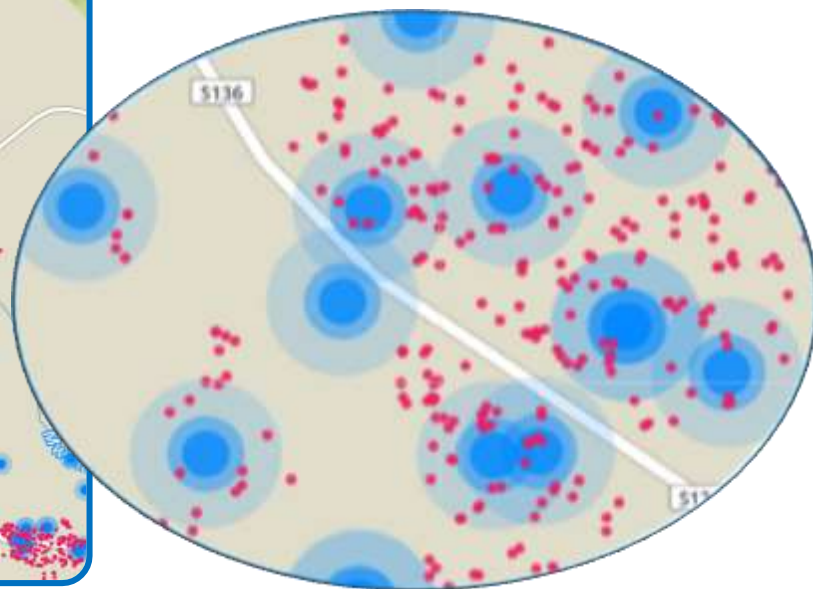
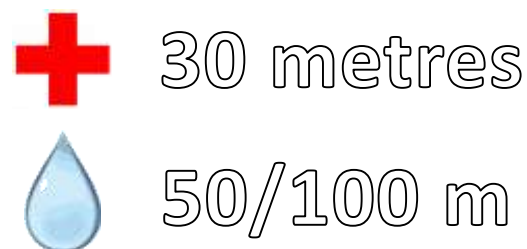
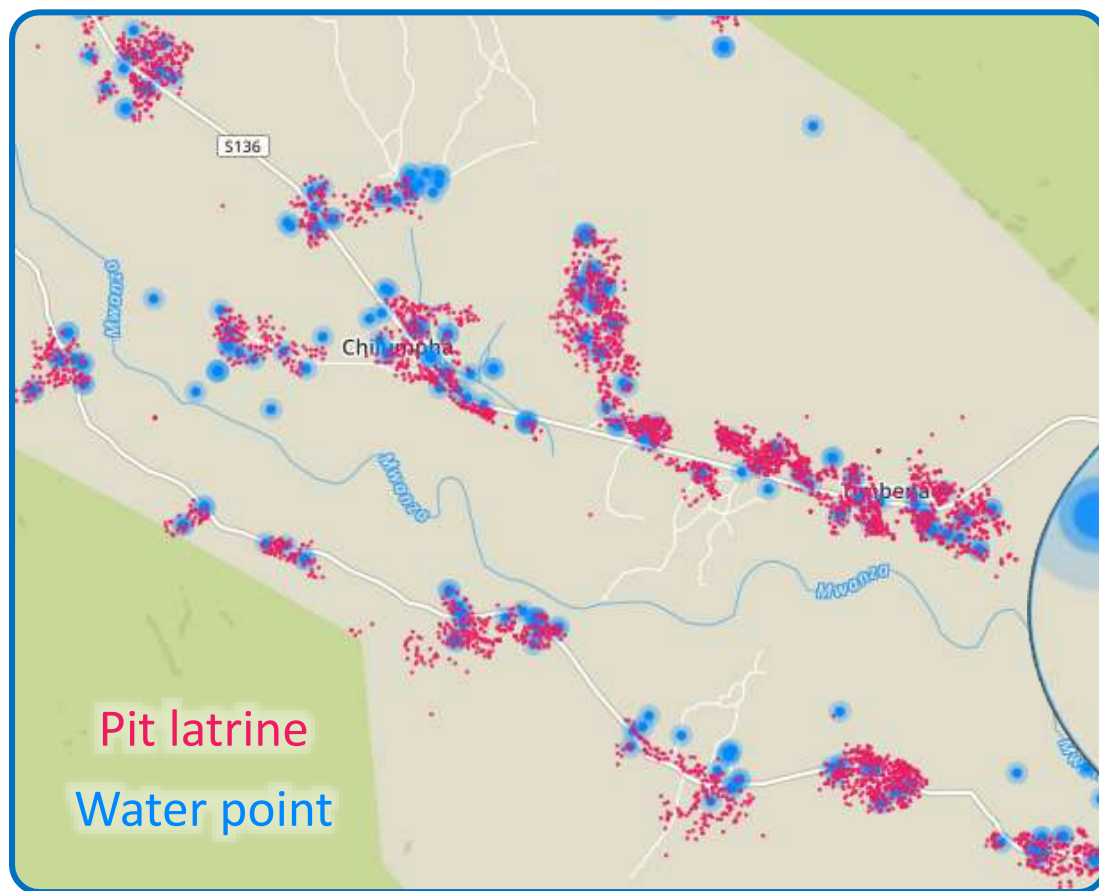
Acceptable
>0.25 l/s

Unacceptable
<0.25 l/s



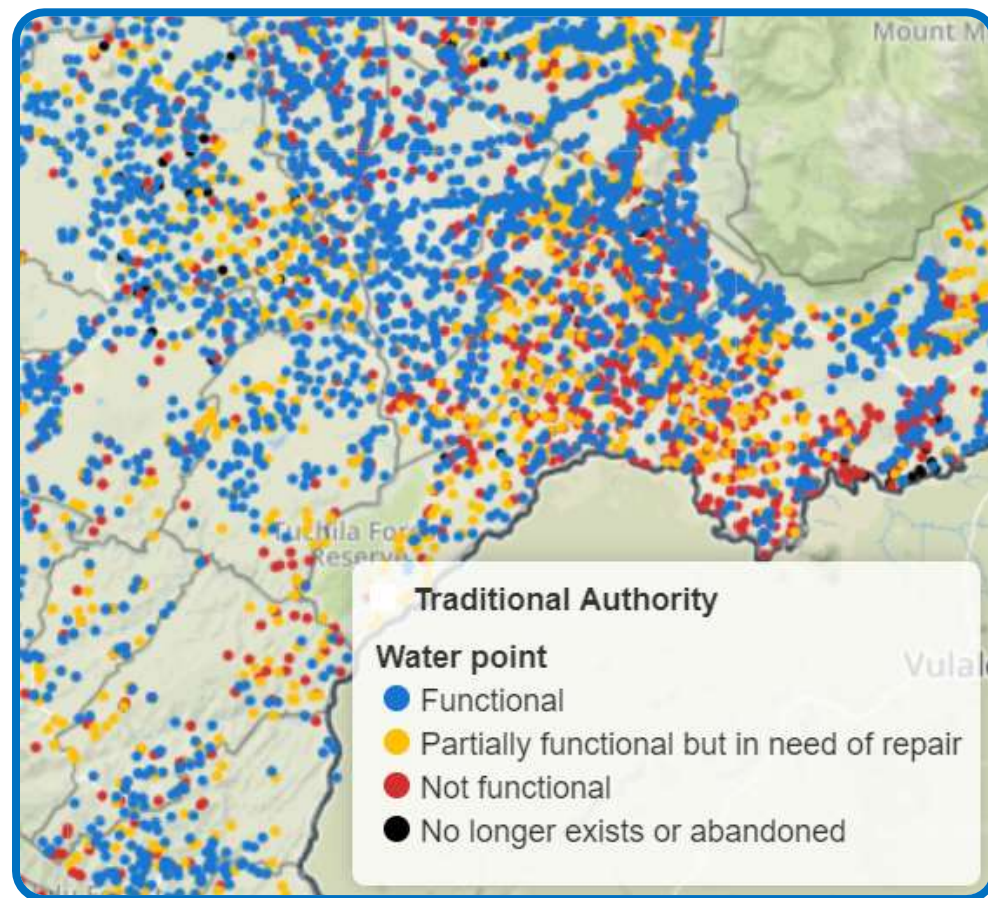
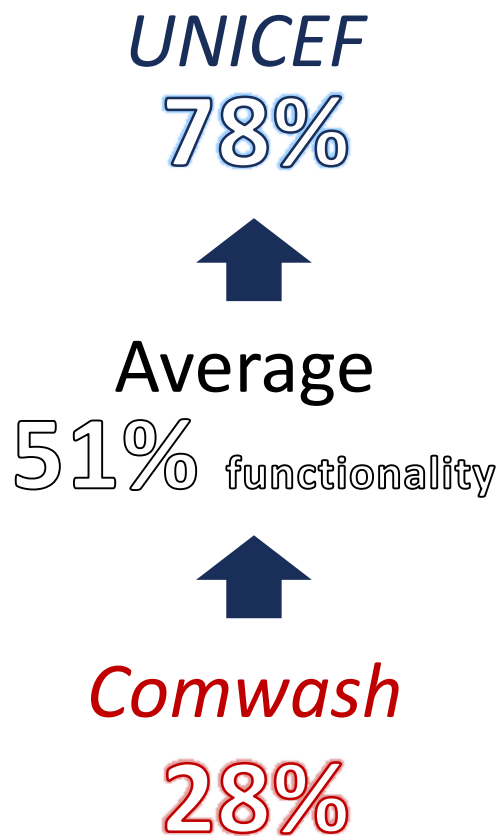
Asset Analysis 2 – Assessing Risk

Reactive management:
Understanding groundwater contamination risk



Asset Analysis 3 – Accountability

Functionality of improved water points by funder:



Dataset = 38,132 water points

Beyond Mapping

How are we using our data?

Engagement with NGOs/private sector:

Water Boards, BASEflow, United Purpose, World Vision, Water For People, WaterAid, BAWI Consultants, EssEss Malawi, Fisherman's Rest



Chiradzulu district

District Strategic Investment Plan (DSIP)
Socio-Economic Profile (SEP)



Innovative and impactful research
Borehole forensic analysis



Knowledge exchange



Community engagement



Capacity building



MIS



Drilling

www.cjfwaterfuturesprogramme.com



University of
Strathclyde
Glasgow

The University of Strathclyde is a charitable body, registered in Scotland, with registration number SC015263

Climate Justice: Water Futures Programme